

'I Can...' Science statements: Experimental and Investigative Science

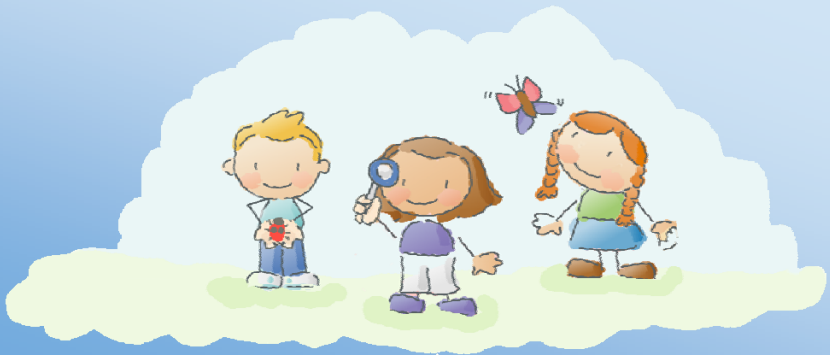
Level 2



I can say how we can investigate ideas suggested to me e.g. sort for floating or sinking.

'I Can...' Science statements: Experimental and Investigative Science

Level 2



I can say what I think will happen next.

'I Can...' Science statements: Experimental and Investigative Science

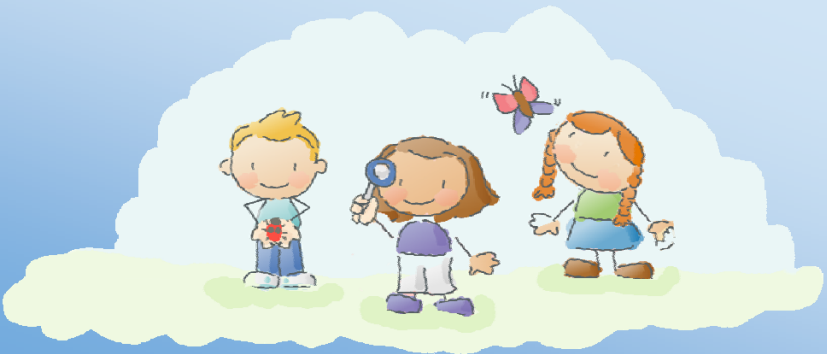
Level 2



I can make observations about what happens.

'I Can...' Science statements: Experimental and Investigative Science

Level 2



I can describe some things that make a test fair or unfair.

'I Can...' Science statements: Experimental and Investigative Science

Level 2



I can use simple equipment.

'I Can...' Science statements: Experimental and Investigative Science

Level 2



I can make a simple chart or graph about my work (with help).

'I Can...' Science statements: Experimental and Investigative Science

Level 2



I am beginning to compare objects, living things and events that I can observe.

'I Can...' Science statements: Experimental and Investigative Science

Level 2



I can say whether or not I expected something to happen.